

GDOP 19 – Erroneous Registrations affecting Green Deal MPANs

Document Control

Version	Status	Author	Release Date	Reason for release
0.1	DRAFT	Dan Cantle	05/03/2013	Initial draft issued for internal MRASCo and TSP comment
0.2	DRAFT	Dan Cantle	16/04/2013	Revisions following review by TSP, updated to align with confirmed requirements for GDCC release R04.0, issued for comment
1.0	FINAL	Dan Cantle	14/05/2013	Baseline requirements for release R04.0 issued as approved.
4.1	Draft	Paul McDowell	18/07/2013	Add clarification text to state where the GD Charge Start Date is greater than the Effective From Settlement Date {REGI} the earliest GD Charge Start Date should be used
5.0	APPROVED	Andy Bard	22/11/2013	Baseline requirements for release R05.0.
6.0	APPROVED	Andy Bard	02/01/2014	Baseline requirements for release R06.0.
7.0	APPROVED	Andy Bard	23/07/2014	Baseline requirements for release R07.0.
8.0	APPROVED	Alex Tear	04/12/2014	Baseline requirements for release R08.0.
9.0	APPROVED	Andy Bard	30/07/2015	Baseline version for release R09.0
10.0	APPROVED	Alex Tear	25/02/2016	Baseline version for release R10.0
11.0	APPROVED	Gary Bilton	30/06/2016	Baseline version for release R11.0
12.0	APPROVED	Gary Bilton	03/11/2016	Baseline version for release R12.0

Document Purpose

This document provides a technical overview of the GDCC and associated functionality required to support the GDCC Green Deal Market Scenarios (GDMS) as defined within the *MRA Agreed Procedure for the Green Deal Central Charge Database* (“MAP 18”).

For the avoidance of doubt, this document is not maintained under the governance of the MRA Change Process, but rather is under the control of the MRASCo Central Administration Service (CAS) for use in the development and testing of GDCC solutions and as such forms part of the agreed GDCC User Requirements Specification for the GDCC release R12.0 baseline

APPROVED

Summary

This scenario covers (from a GDCC perspective) the process for managing amendments to Green Deal Charges in the GDCC resulting from periods of Erroneous Registration as defined under the MRA, and associated notifications to Green Deal Market Participants. As such, it includes:

- A notification from the Green Deal Licensee that an Erroneous Registration affecting a Green Deal MPAN Core has been confirmed;
- Validation of the request by the GDCC, and subsequent updates to records where it is valid;
- GDCC responses to the Green Deal Licensee for both successful and unsuccessful notifications;
- Notifications to the GD Provider and GD Remittance Processor informing them of both the Erroneous Registration and its resolution;
- Requests from the CAS to the GDCC to effect related changes; and
- Amendments of Green Deal Charges in the GDCC and passing of these values to the incoming Green Deal Licensee on a Change of Supplier event.

The following pre-requisites apply to the use of this process:

- The Green Deal Licensee notifying the GDCC of the Erroneous Registration is the registered Supplier for the relevant Green Deal MPAN Core at the date the notification is made; and

The Green Deal Plan record must have a status of 'LIVE' in the GDCC or have been at a status of 'LIVE' in the GDCC on the date of the **Effective From Settlement Date {REGI}** corresponding to the start of the Erroneous Registration

The following DTN data flows are used within this process:

- D0320 GD Provider Response to GDCC
- D0325 Green Deal Plan Information for Green Deal Licensee
- D0341 GD Licensee Response to GDCC
- D0343 Response from GDCC to GD Licensee
- D0345 Green Deal Licensee Notification of Erroneous Registration



MRA Service Company

- D0346
- D0347

Notification of Erroneous Registration Status
GD Remittance Processor Response to GDCC

APPROVED

Market Process Scenario

The process steps within this scenario are aligned to those in the accompanying process workflow. A list of reject codes is also provided cross-referenced to the market scenario

Step	Activity	Input Step	Output Step
1.1	Having confirmed that they are erroneously registered as Supplier, the Green Deal Licensee generates an D0345 data flow to the GDCC containing: <ul style="list-style-type: none"> a) A unique Party Instruction Number; b) The Green Deal MPAN Core affected by the Erroneous Registration; and c) The Effective From Settlement Date {REGI} for the affected registration period. 	STARTS	1.2
1.2	The GDCC processes the incoming D0345 data flow and updates logs and records accordingly	1.1	2.1

Step	Activity	Input Step	Output Step
2.1	<p>The GDCC will carry out basic internal checks against the data received, these will determine that:</p> <ul style="list-style-type: none"> a) All mandatory fields are present; b) The Party Instruction Number is unique for the party sending the instruction; c) The Green Deal Licensee MPID is both valid and associated with the appropriate role in GDMD for the effective date of the proposed Green Deal Plan record update(s); and d) The Green Deal MPAN Core provided is; <ul style="list-style-type: none"> i. in a valid format; ii. recognised by the GDCC; iii. currently associated to the Green Deal Licensee sending the request for the Effective From Settlement Date {REGI} provided and the Effective From Settlement Date {REGI} matches the EFD of the Green Deal Licensee as held in ECOES; and iv. the Effective From Settlement Date {REGI} for the corresponding Green Deal MPAN Core in the D0345 corresponds to a date where at least one Green Deal Plan record associated with that Green Deal MPAN Core was or is at a status of 'LIVE' in the GDCC. v. where the Erroneous Registration Effective from Settlement Date took place when a plan was live, but the D0345 was received after the plan had ended then D0346:E flows should be sent out to the Green Deal Provider and Remittance Processor, but no D0325 should be sent to the Licensee (because the plan has ended). 	1.2	3.1 (FAIL) OR 4.1 (PASS)
3.1	<p>Where the data fails validation at steps 2.1, the GDCC will record rejection reasons for generation in a D0343 data flow.</p> <p>The D0343 data flow will include the Green Deal Licensees incoming Party Instruction Number as a reference point and all relevant GDCC Response Codes generated by the GDCC for the step at which the data was rejected.</p>	2.1 OR 4.1	3.2

Step	Activity	Input Step	Output Step
3.2	Where the data fails validation and an exception is reported, the Green Deal Licensee will need to determine the reason for the rejection and take appropriate action as required. No update will be made to records on the GDCC.	3.1	ENDS
4.1	<p>Where the request passes validation at step 2.1, the GDCC will carry out checks against ECOES to confirm that the associated Green Deal MPAN Core:</p> <ul style="list-style-type: none"> a) Is not associated to an export supply (which is derived in ECOES by the Line Loss Factor Class applied in MPAS); b) Has a status of 'Traded'; c) Is registered to the Green Deal Licensee who submitted the D0345 data flow from the Effective From Settlement Date {REGI} submitted; d) Is not 'in flight' between Suppliers (that is, where a Registration Request has been received and accepted within the previous ten (10) Working Days); and e) Does not have a future registration to a Supplier who is not a Green Deal Licensee. 	2.1	3.1 (FAIL) OR 5.1 (PASS)

Step	Activity	Input Step	Output Step
5.1	<p>Where the request passes validation at step 4.1, those Green Deal Plan record(s) at a status of "LIVE" in the GDCC for any GD Plan Id(s) associated to the affected Green Deal MPAN Core will be updated to indicate that an Erroneous Registration is in the process of being resolved.</p> <p>No updates will be made to Green Deal Plan Records associated to the affected Green Deal MPAN Core that are at a status of "COMPLETED" in the GDCC. Notifications will be generated to the GD Provider and the GD Remittance Processor as set out in steps 25.1 and 30.1 of this process for those Green Deal Plan Records that are at a status of "COMPLETED" but that were at a Status of "LIVE" when the Erroneous Registration took place.</p>	4.1	<p>For plans at a status of "LIVE"</p> <p>6.1 AND 7.1 AND 12.1 AND 17.1</p> <p>AND</p> <p>For Plans at a status of "COMPLETED"</p> <p>6.1 AND 25.1 AND 30.1</p>
6.1	Once all required updates have been completed, the GDCC will generate a D0343 data flow to the Green Deal Licensee confirming that the notification was successfully processed.	5.1	6.2
6.2	On receipt of this notification, the Green Deal Licensee may update their records accordingly.	6.1	

Step	Activity	Input Step	Output Step
7.1	<p>The GDCC will generate an instruction to the Green Deal Licensee who is the erroneously registered Supplier to set Green Deal Charges to zero. This will be in the form of a D0325 data flow for each affected Green Deal Plan, the D0325 data flow will contain:</p> <ul style="list-style-type: none"> a) The Green Deal MPAN Core; b) The GD Plan ID; c) A unique sequential GDCC Instruction Number; d) A GDCC Instruction Type of 'T' indicating that the data flow relates to the provision of revised charging information to an erroneously registered Supplier; and e) A single Green Deal Charge Period comprising: <ul style="list-style-type: none"> i. Either <ul style="list-style-type: none"> i. A GD Charge Start Date equal to the Effective From Settlement Date {REGI} of the period of Erroneous Registration; or ii. where the GD Charge Start Date is greater than the Effective From Settlement Date {REGI} the earliest GD Charge Start Date; ii. A GD Charge End Date equal to the GD Plan Actual End Date held in the GDCC for the related Green Deal Plan record and iii. A GD Daily Charge of zero (£0.00). 	5.1	8.1
8.1	On receipt of the D0325 data flow, the Green Deal Licensee will update their systems accordingly.	7.1	9.1
9.1	The Green Deal Licensee will generate a D0341 data flow including the GDCC Instruction Number from the incoming instruction, and the appropriate GD Party Response Code to indicate that the information was successfully received.	8.1	9.2

Step	Activity	Input Step	Output Step
9.2	<p>On receipt of the D0341 data flow, the GDCC will validate that it relates to a valid GDCC Instruction Number for a data flow issued to the sending Green Deal Licensee.</p> <p>Where this validation is passed, the process will continue as set out in step 22.1, otherwise a report is generated to the MRASCo Central Administration Service (CAS) as per step 10.1.</p>	9.1	10.1 (FAIL) OR 22.1 (PASS)
10.1	Where an incoming D0341 data flow from a Green Deal Licensee cannot be associated to a valid GDCC Instruction Number to allow the process to continue, the GDCC will generate a report to the CAS for investigation.	9.2	10.2
10.2	CAS will contact the sender of the D0341 data flow in order to request investigation and resolution of issues.	10.1	11.1
11.1	Once contacted by CAS, the Green Deal Licensee will investigate and resolve issues with the data sent in the D0341 data flow, and generate a revised D0341 data flow acceptance confirmation, as set out in step 9.1.	10.2	9.1
12.1	<p>The GDCC will generate a notification to the GD Provider using a D0346 data flow. This notification will include:</p> <ul style="list-style-type: none"> a) A unique sequential GDCC Instruction Number; b) The affected GD Plan ID; c) An Erroneous Registration Status of 'I' to confirm that an Erroneous Registration has been identified; and d) The Effective From Settlement Date {REGI} of the period of erroneous registration. 	5.1	13.1
13.1	On receipt of the D0346 data flow, the GD Provider will update their internal systems and data as required.	12.1	14.1
14.1	The GD Provider will generate a D0320 data flow including the GDCC Instruction Number from the incoming data flow, and the appropriate GD Party Response Code to indicate that the information was successfully received.	13.1	14.2
14.2	<p>On receipt of the D0320 data flow, the GDCC will validate that it relates to a valid GDCC Instruction Number for a data flow issued to the sending GD Provider.</p> <p>Where this validation is passed, the process will continue as set out in step 22.1, otherwise a report is generated to the MRASCo Central Administration Service (CAS) as per step 15.1.</p>	14.1	15.1 (FAIL) OR 22.1 (PASS)

Step	Activity	Input Step	Output Step
15.1	Where an incoming D0320 data flow from a GD Provider cannot be associated to a valid GDCC Instruction Number to allow the process to continue, the GDCC will generate a report to the CAS for investigation.	14.2	15.2
15.2	CAS will contact the sender of the D0320 data flow in order to request investigation and resolution of issues.	15.1	16.1
16.1	Once contacted by CAS, the GD Provider will investigate and resolve issues with the data sent in the D0320 data flow, and generate a revised D0320 data flow acceptance confirmation, as set out in step 14.1.	15.2	14.1
17.1	The GDCC will generate a notification to the GD Remittance Processor using a D0346 data flow. This notification will include: <ul style="list-style-type: none"> a) A unique sequential GDCC Instruction Number; b) The affected GD Plan ID; c) An Erroneous Registration Status of 'I' to confirm that an Erroneous Registration has been identified; and d) The Effective From Settlement Date {REGI} of the period of erroneous registration. 	5.1	18.1
18.1	On receipt of the D0346 data flow, the GD Remittance Processor will update their internal systems and data as required.	17.1	19.1
19.1	The GD Remittance Processor will generate a D0347 data flow including the GDCC Instruction Number from the incoming data flow, and the appropriate GD Party Response Code to indicate that the information was successfully received.	18.1	19.2
19.2	On receipt of the D0347 data flow, the GDCC will validate that it relates to a valid GDCC Instruction Number for a data flow issued to the sending GD Remittance Processor. Where this validation is passed, the process will continue as set out in step 22.1, otherwise a report is generated to the MRASCo Central Administration Service (CAS) as per step 15.1.	19.1	20.1 (FAIL) OR 22.1 (PASS)
20.1	Where an incoming D0347 data flow from a GD Remittance Processor cannot be associated to a valid GDCC Instruction Number to allow the process to continue, the GDCC will generate a report to the CAS for investigation.	19.2	20.2

Step	Activity	Input Step	Output Step
20.2	CAS will contact the sender of the D0347 data flow in order to request investigation and resolution of issues.	20.1	21.1
21.1	Once contacted by CAS, the GD Remittance Processor will investigate and resolve issues with the data sent in the D0347 data flow, and generate a revised D0347 data flow acceptance confirmation, as set out in step 14.1.	20.2	22.1
22.1	Where a valid response is received from any of the Green Deal Licensee, the GD Provider or the GD Remittance Processor, the GDCC will log this and update records as appropriate. The non-receipt of a response from any party will not prevent the GDCC from generating further data flows as set out in this process.	9.2 AND 14.2 AND 19.2	23.1
23.1	The GDCC will monitor for two events in relation to Green Deal Plan records that have been updated to indicate that an Erroneous Registration is in the process of being resolved: a) The GD Plan Actual End Date is reached; or b) A Change of Supplier event occurs in relation to the affected Green Deal MPAN Core . Where one of these events occurs, the GDCC will follow the processes set out in steps from 24.1 or from 36.1 of this process respectively.	22.1	24.1 (GD Plan Actual End Date Reached) OR 36.1 (Erroneous Registration resolved)
24.1	Where the GD Plan Actual End Date is reached during a period of Erroneous Registration, the GDCC will update the GD Plan Record status accordingly and generate notifications to the GD Provider and the GD Remittance Processor as set out in steps 25.1 and 30.1 of this process. This will include where the GD Plan Actual End Date is amended leading to the Green Deal Plan record status changing to 'COMPLETED' during the period of Erroneous Registration.	23.1	25.1 AND 30.1

Step	Activity	Input Step	Output Step
25.1	The GDCC will generate a notification to the GD Provider using a D0346 data flow. This notification will include: <ul style="list-style-type: none"> a) A unique sequential GDCC Instruction Number; b) The affected GD Plan ID; c) An Erroneous Registration Status of 'E' to confirm that the GD Plan Actual End Date has been reached during a period of Erroneous Registration; d) The Effective From Settlement Date {REGI} of the period of erroneous registration; and e) The GD Plan Actual End Date for the affected Green Deal Plan record. 	24.1	26.1
26.1	On receipt of the D0346 data flow, the GD Provider will update their internal systems and data as required.	25.1	27.1
27.1	The GD Provider will generate a D0320 data flow including the GDCC Instruction Number from the incoming instruction, and the appropriate GD Party Response Code to indicate that the information was successfully received.	26.1	27.2
27.2	On receipt of the D0320 data flow, the GDCC will validate that it relates to a valid GDCC Instruction Number for a data flow issued to the sending GD Provider. Where this validation is passed, the process will continue as set out in step 35.1, otherwise a report is generated to the MRASCo Central Administration Service (CAS) as per step 28.1.	27.1	28.1 (FAIL) OR 35.1 (PASS)
28.1	Where an incoming D0320 data flow from a GD Provider cannot be associated to a valid GDCC Instruction Number to allow the process to continue, the GDCC will generate a report to the CAS for investigation.	27.2	28.2
28.2	CAS will contact the sender of the D0320 data flow in order to request investigation and resolution of issues.	28.1	29.1
29.1	Once contacted by CAS, the GD Provider will investigate and resolve issues with the data sent in the D0320 data flow, and generate a revised D0320 data flow acceptance confirmation, as set out in step 27.1.	28.2	27.1

Step	Activity	Input Step	Output Step
30.1	<p>The GDCC will generate a notification to the GD Remittance Processor using a D0346 data flow. This notification will include:</p> <ul style="list-style-type: none"> f) A unique sequential GDCC Instruction Number; g) The affected GD Plan ID; h) An Erroneous Registration Status of 'E' to confirm that the GD Plan Actual End Date has been reached during a period of Erroneous Registration; i) The Effective From Settlement Date {REGI} of the period of erroneous registration; and j) The GD Plan Actual End Date for the affected Green Deal Plan record. 	34.1	31.1
31.1	On receipt of the D0346 data flow, the GD Remittance Processor will update their internal systems and data as required.	30.1	32,1
32.1	The GD Remittance Processor will generate a D0347 data flow including the GDCC Instruction Number from the incoming instruction, and the appropriate GD Party Response Code to indicate that the information was successfully received.	31.1	32.2
32.2	<p>On receipt of the D0347 data flow, the GDCC will validate that it relates to a valid GDCC Instruction Number for a data flow issued to the sending GD Remittance Processor.</p> <p>Where this validation is passed, the process will continue as set out in step35.1, otherwise a report is generated to the MRASCo Central Administration Service (CAS) as per step33.1.</p>	32.1	33.1 (FAIL) OR 35.1 (PASS)
33.1	Where an incoming D0347 data flow from a GD Remittance Processor cannot be associated to a valid GDCC Instruction Number to allow the process to continue, the GDCC will generate a report to the CAS for investigation.	32.2	33.2
33.2	CAS will contact the sender of the D0347 data flow in order to request investigation and resolution of issues.	33.1	34.1
34.1	Once contacted by CAS, the GD Remittance Processor will investigate and resolve issues with the data sent in the D0347 data flow, and generate a revised D0347 data flow acceptance confirmation, as set out in step32.1.	33.2	32.1

Step	Activity	Input Step	Output Step
35.1	Where a valid response is received from any of the Green Deal Licensee, the GD Provider or the GD Remittance Processor, the GDCC will log this and update records as appropriate.	27.2 AND 32.2	ENDS
36.1	The GDCC will monitor for Change of Supplier events as reported from ECOES, in accordance with the GDOP 17 <i>Passing of Green Deal Details on Change of Supplier</i> process. Where such an event is reported and the Green Deal Plan record in the GDCC is both at a status of 'LIVE' and the associated Green Deal MPAN Core is identified as being erroneously registered, the GDCC will make updates to records as set out in step 37.1 of this process.	23.1	37.1
37.1	Prior to issuing any updates to the incoming Green Deal Licensee under the GDOP 17 <i>Passing of Green Deal Details on Change of Supplier</i> process. The Green Deal Charges held on the GDCC will be updated so that: <ul style="list-style-type: none"> a) The GD Daily Charge for the period from the Effective From Settlement Date {REGI} to the Effective To Settlement Date {REGI} of the Erroneous Registration is set to zero (£0.00) for each day; and b) The GD Daily Charge for the Effective From Settlement Date {REGI} of the subsequent registration identified is updated to an amount equal to the total charges which would have been due during the period of the Erroneous Registration plus the charge already held on the GDCC for that date. <p>The Erroneous Registration flag against the relevant Green Deal MPAN Core will also be un-set such that the GDCC no longer treats the record as being under this process.</p> <p>The GD Daily Charges for all other dates should remain unaffected, but with GD Daily Charge Start Dates and GD Daily Charge End Dates amended as required to have the effect set out above.</p>	36.1	37.2
37.2	Following the updating of internal records, the GDCC will notify the Green Deal Licensee, GD Provider, and GD Remittance Processor as set out in steps 38.1, 39.1 and 44.1 of this process.	37.1	38.1 AND 39.1 AND 44.1

Step	Activity	Input Step	Output Step
38.1	The Green Deal Licensee will be notified of the relevant GD Charges via the GDOP 17 <i>Passing of Green Deal Details on Change of Supplier</i> process.	37.1	ENDS
39.1	The GDCC will generate a notification to the GD Provider using a D0346 data flow. This notification will include: <ul style="list-style-type: none"> a) A unique sequential GDCC Instruction Number; b) The affected GD Plan ID; c) An Erroneous Registration Status of 'R' to confirm that the Erroneous Registration has been resolved; d) The Effective From Settlement Date {REGI} of the period of erroneous registration; and e) The Effective To Settlement Date {REGI} of the period of erroneous registration. 	37.2	40.1
40.1	On receipt of the D0346 data flow, the GD Provider will update their internal systems and data as required.	39.1	41.1
41.1	The GD Provider will generate a D0320 data flow including the GDCC Instruction Number from the incoming instruction, and the appropriate GD Party Response Code to indicate that the information was successfully received.	40.1	41.2
41.1	On receipt of the D0320 data flow, the GDCC will validate that it relates to a valid GDCC Instruction Number for a data flow issued to the sending GD Provider. Where this validation is passed, the process will continue as set out in step49.1, otherwise a report is generated to the MRASCo Central Administration Service (CAS) as per step42.1.	41.1	42.1 (FAIL) OR 49.1 (PASS)
42.1	Where an incoming D0320 data flow from a GD Provider cannot be associated to a valid GDCC Instruction Number to allow the process to continue, the GDCC will generate a report to the CAS for investigation.	41.2	42.2
42.2	CAS will contact the sender of the D0320 data flow in order to request investigation and resolution of issues.	42.1	43.1
43.1	Once contacted by CAS, the GD Provider will investigate and resolve issues with the data sent in the D0320 data flow, and generate a revised D0320 data flow acceptance confirmation, as set out in step41.1.	42.2	41.1

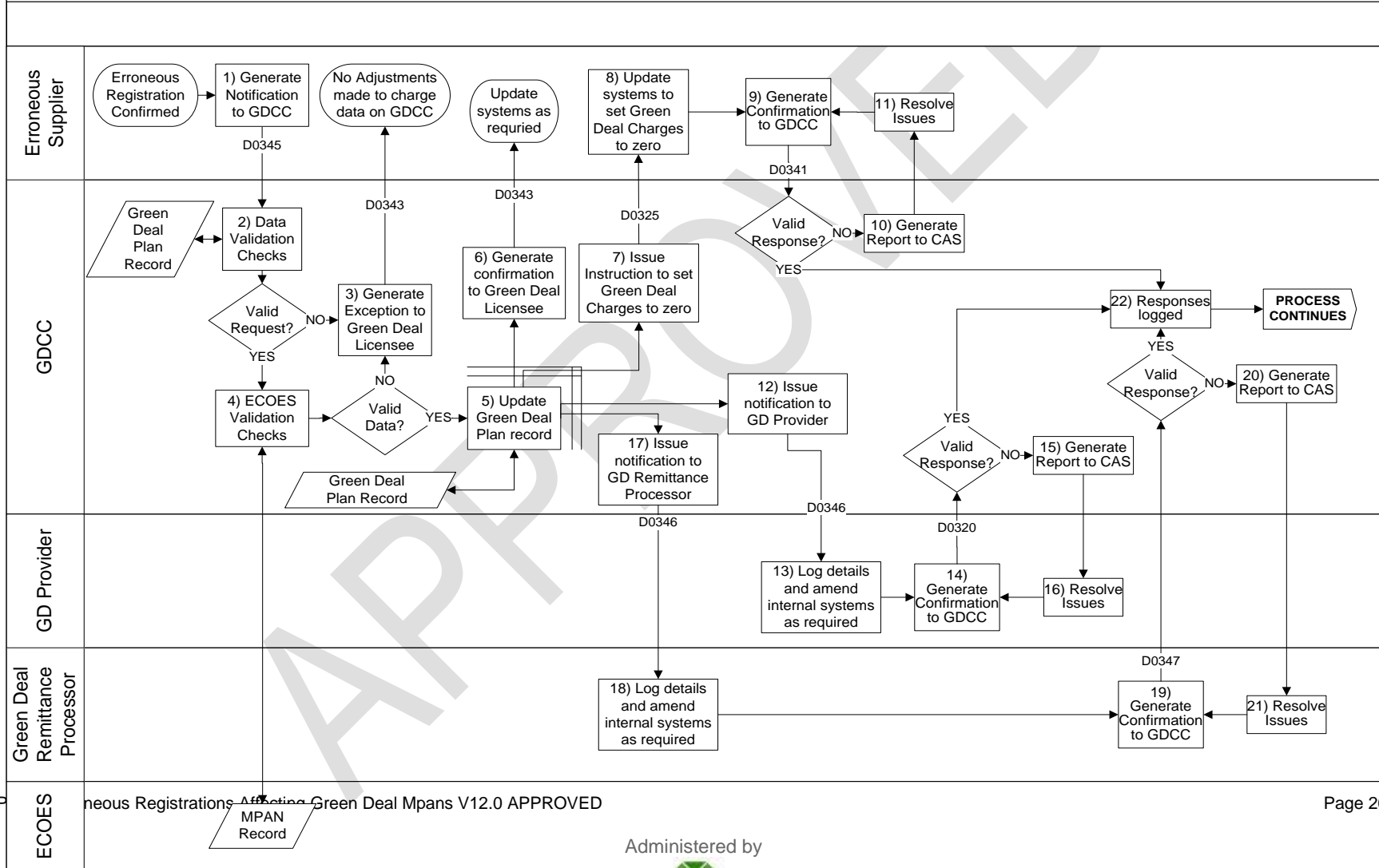
Step	Activity	Input Step	Output Step
44.1	<p>The GDCC will generate a notification to the GD Remittance Processor using a D0346 data flow. This notification will include:</p> <ul style="list-style-type: none"> a) A unique sequential GDCC Instruction Number; b) The affected GD Plan ID; c) An Erroneous Registration Status of 'R' to confirm that the Erroneous Registration has been resolved; d) The Effective From Settlement Date {REGI} of the period of erroneous registration; and e) The Effective To Settlement Date {REGI} of the period of erroneous registration. 	37.2	45.2
45.1	On receipt of the D0346 data flow, the GD Remittance Processor will update their internal systems and data as required.	44.1	46.1
46.1	The GD Remittance Processor will generate a D0347 data flow including the GDCC Instruction Number from the incoming instruction, and the appropriate GD Party Response Code to indicate that the information was successfully received.	45.1	46.2
46.2	<p>On receipt of the D0347 data flow, the GDCC will validate that it relates to a valid GDCC Instruction Number for a data flow issued to the sending GD Remittance Processor.</p> <p>Where this validation is passed, the process will continue as set out in step49.1, otherwise a report is generated to the MRASCo Central Administration Service (CAS) as per step47.1.</p>	46.1	47.1 (FAIL) OR 49.1 (PASS)
47.1	Where an incoming D0347 data flow from a GD Remittance Processor cannot be associated to a valid GDCC Instruction Number to allow the process to continue, the GDCC will generate a report to the CAS for investigation.	46.2	47.2
47.2	CAS will contact the sender of the D0347 data flow in order to request investigation and resolution of issues.	47.1	48.1
48.1	Once contacted by CAS, the GD Remittance Processor will investigate and resolve issues with the data sent in the D0347 data flow, and generate a revised D0347 data flow acceptance confirmation, as set out in step 46.1.	47.2	46.1
49.1	Where a valid response is received from the GD Provider or the GD Remittance Processor, the GDCC will log this and update records as appropriate.	41.2 OR 46.2	ENDS

GDCC and Party Response Codes used in the Scenario

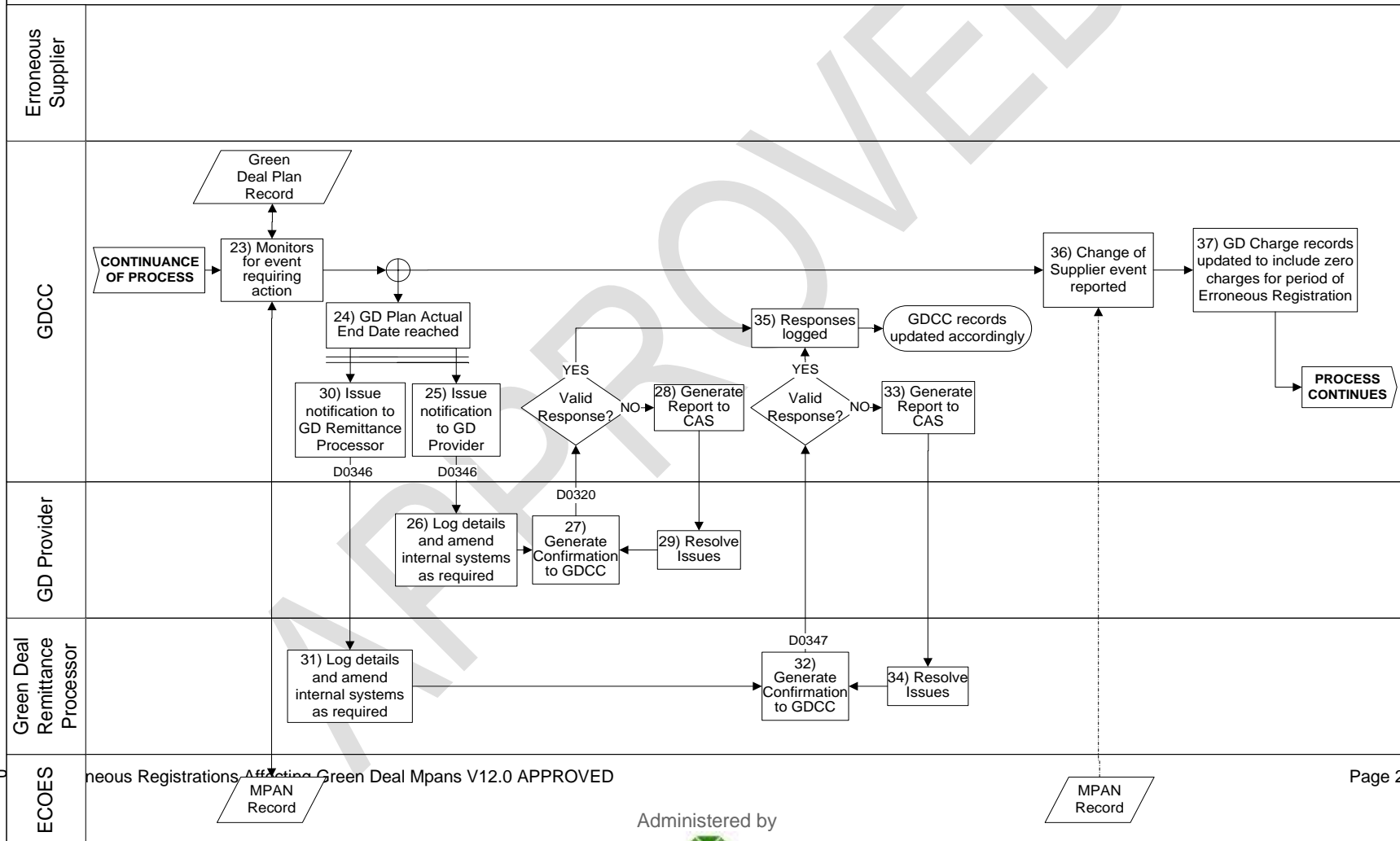
Step	Event	Flow	Response Code Generated	Flow
2.1	Not all Mandatory fields are populated	D0345	301 Not all mandatory data provided	D0343
	MPAN Cores not for a valid DNO (i.e. 1st two digits not valid)		309 MPAN Core Invalid	
	MPAN Cores provided fail the standard industry modulus 11 validation		309 MPAN Core Invalid	
	The Green Deal MPAN Core provided is in a valid format, but not recognised by the GDCC		317 Green Deal MPAN Core not found	
	The Party Instruction Number provided is a duplicate for the party sending the flow		350 Invalid Party Instruction Number	
	The party sending the request is not the Green Deal Licensee associated to the Green Deal MPAN Core provided for the Effective From Settlement Date {REGI} provided		334 Green Deal Licensee not the registered Supplier for the MPAN Core	
	No Green Deal Plan records with a status of 'LIVE' are or were associated with the Green Deal MPAN Core on the Effective From Settlement Date {REGI} provided		370 No Green Deal Plan record at the correct status associated to GD MPAN Core provided	
	The Combination of MPID and Market Role for the sender is not valid in GDMD for the EFD of the incoming transaction		367 Combination of MPID and Market Role not valid in GDMD for Sender for EFD	
4.1	LLFC is for an export meter according to ECOES	D0345	312 MPAN Core LLFC not valid for import meter	D0343
	MPAN not 'traded' (i.e. not live and registered to a Supplier)		341 MPAN Core not at correct registration status	
	The MPAN is 'in-flight' between Suppliers		341 MPAN Core not at correct registration status	
	A future registration exists to a Supplier who is not a Green Deal Licensee		361 Future Registration to Supplier who is not Green Deal Licensee	

Step	Event	Flow	Response Code Generated	Flow
6.1	Request processed successfully in GDCC	D0345	101 Request processed successfully	D0343
9.1	Data received and Green Deal Licensee systems updated	D0325	101 Request processed successfully	D0341
14.1	Data received and updates made to GD Provider systems as required	D0346	101 Request processed successfully	D0320
19.1	Data received and updates made to GD Remittance Processor systems as required	D0346	101 Request processed successfully	D0347
27.1	Data received and updates made to GD Provider systems as required	D0346	101 Request processed successfully	D0320
32.1	Data received and updates made to GD Remittance Processor systems as required	D0346	101 Request processed successfully	D0347
41.1	Data received and updates made to GD Provider systems as required	D0346	101 Request processed successfully	D0320
46.1	Data received and updates made to GD Remittance Processor systems as required	D0346	101 Request processed successfully	D0347

GDOP 19 – Erroneous Registrations (1)



GDOP 19 – Erroneous Registrations (2)



GDOP 19 – Erroneous Registrations (3)

